

WV 131 Benedum Drive Widening Project | Bridgeport, West Virginia

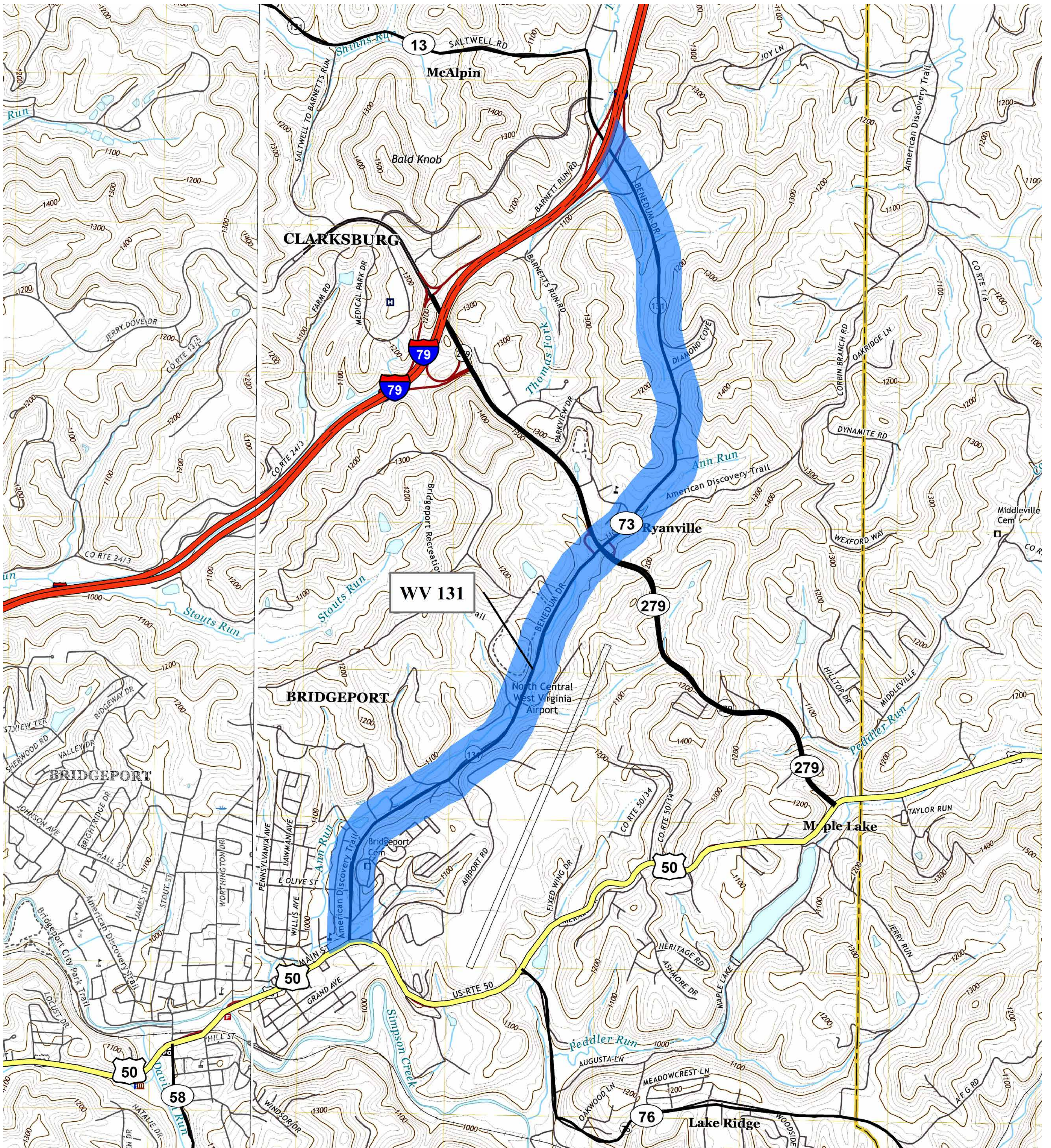
Summary of Key Project Impacts

Item	Description	Build Alternative	No-Build Alternative
	Meets Project Needs?	Yes	No
Geometric Features	Road Widening Length (ft)	16,488 ft	N/A
	Design Speed	35, 45 MPH	35, 45 MPH
	Minimum Horizontal Radius (ft)	314, 587	N/A
	Maximum Vertical Grade	10%	N/A
	Design Exceptions Required?	No	No
Right-of-Way Impacts	Structures Impacted (Residential)	3	N/A
	Structures Impacted (Non-Residential)	1	N/A
	Permanent Right-of-Way Takes	77	N/A
	Permanent Right-of-Way Impacts (Acres)	20.93	N/A
	Permanent Easements	2	N/A
	Permanent Easements (Acres)	0.02	N/A
	Permanent Drainage Easements	17	N/A
	Permanent Drainage Easements (Acres)	0.68	N/A
	Temporary Construction Easements	26	N/A
	Temporary Construction Easements (Acres)	1.50	N/A
	Temporary Easements	2	N/A
	Temporary Easements (Acres)	0.16	N/A
	Driveways Impacted	42	N/A
Local Road Impacts	Permanent - Number	12	N/A
	Permanent - Length	1,825.15	N/A
	Temporary - Number	0	N/A
	Temporary - Length	0	N/A
Potential Utility Impacts	Utility Pole Relocations	80	N/A
	Water Meter / Valves affected	17	N/A
	Sanitary Sewer Manholes affected	0	N/A
	Waterline Relocations (ft)	8,500	N/A
	Sanitary Sewer Line Relocations (ft)	0	N/A
Preliminary Cost Estimate	Construction Cost	\$23,795,726	N/A
	Utilities	\$13,356.00	N/A
	Right-of-Way Cost	\$4,850.00	N/A
	Total Cost (with Utilities and R/W)	\$23,813,932	N/A

February 13, 2024



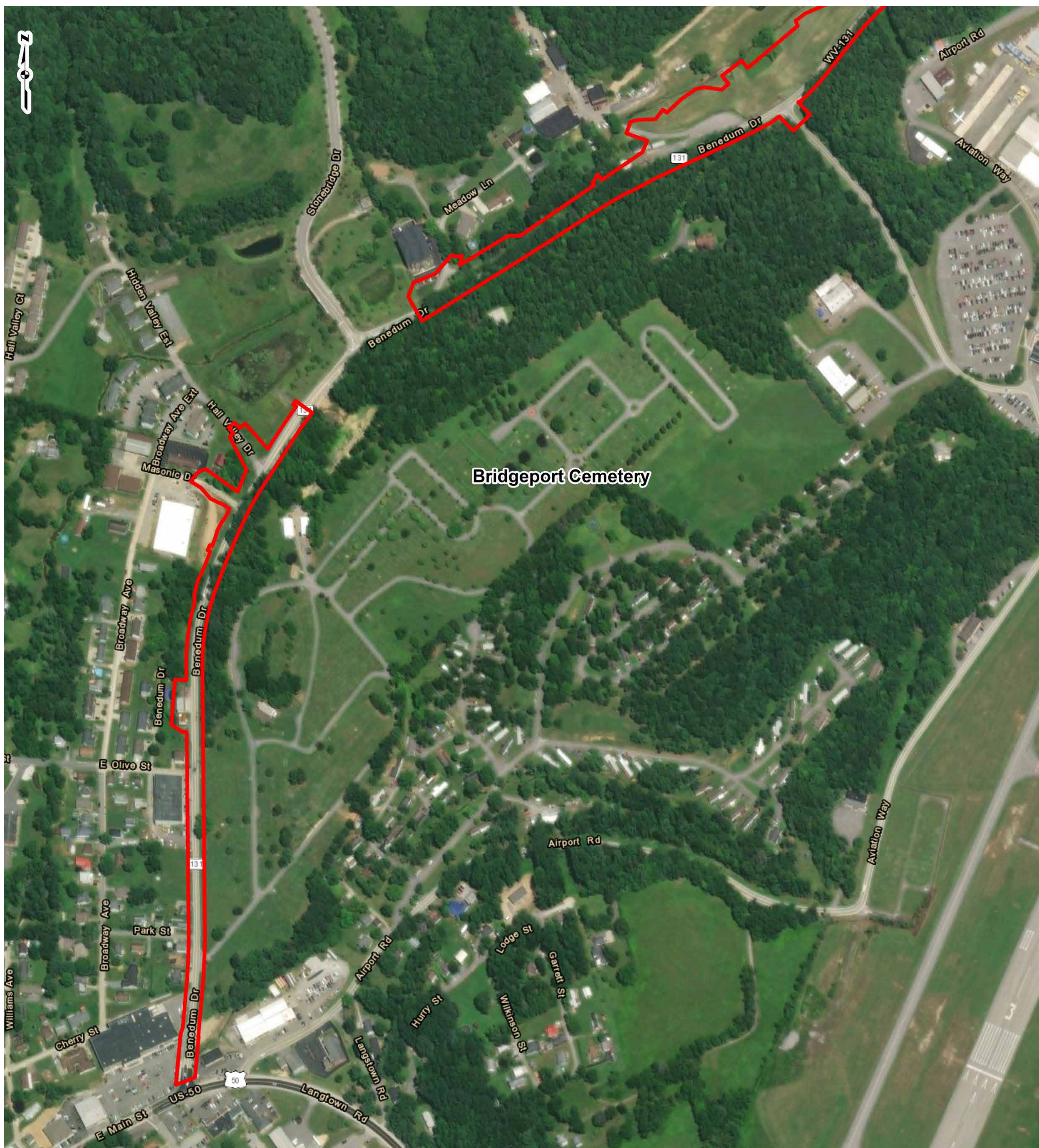
Project Location



February 13, 2024



Study Area



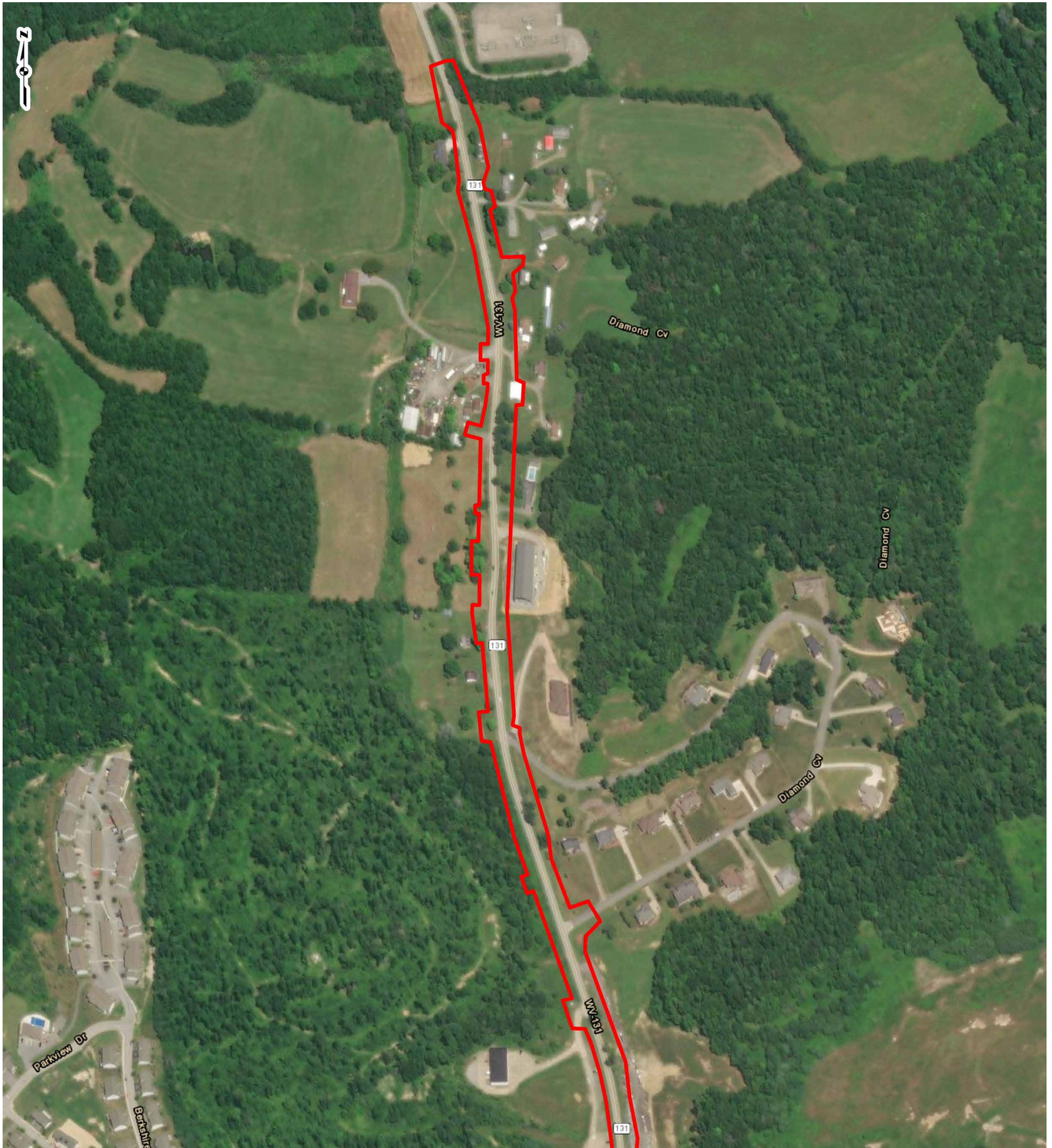
Study Area



Study Area



Study Area



Detour Routes

